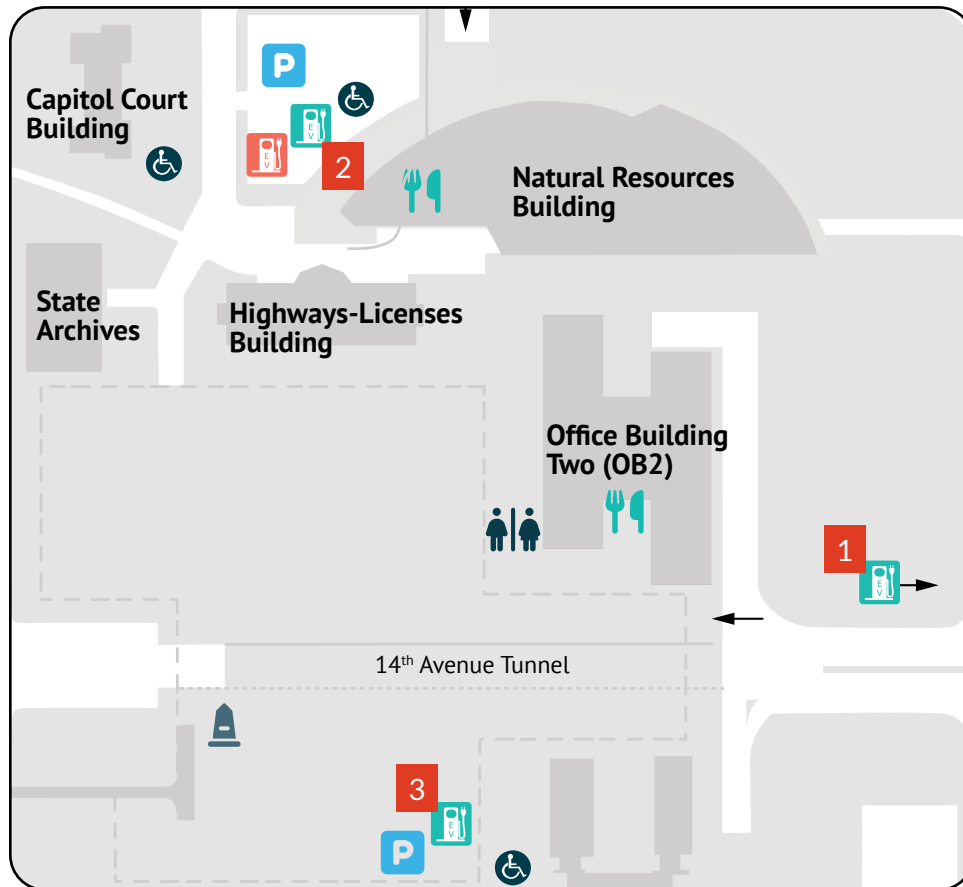


Electric vehicle (EV) charging stations

EV charging stations are available for visitors at Capitol Gateway Park, the Natural Resources Building, and on level A of the Plaza Garage.

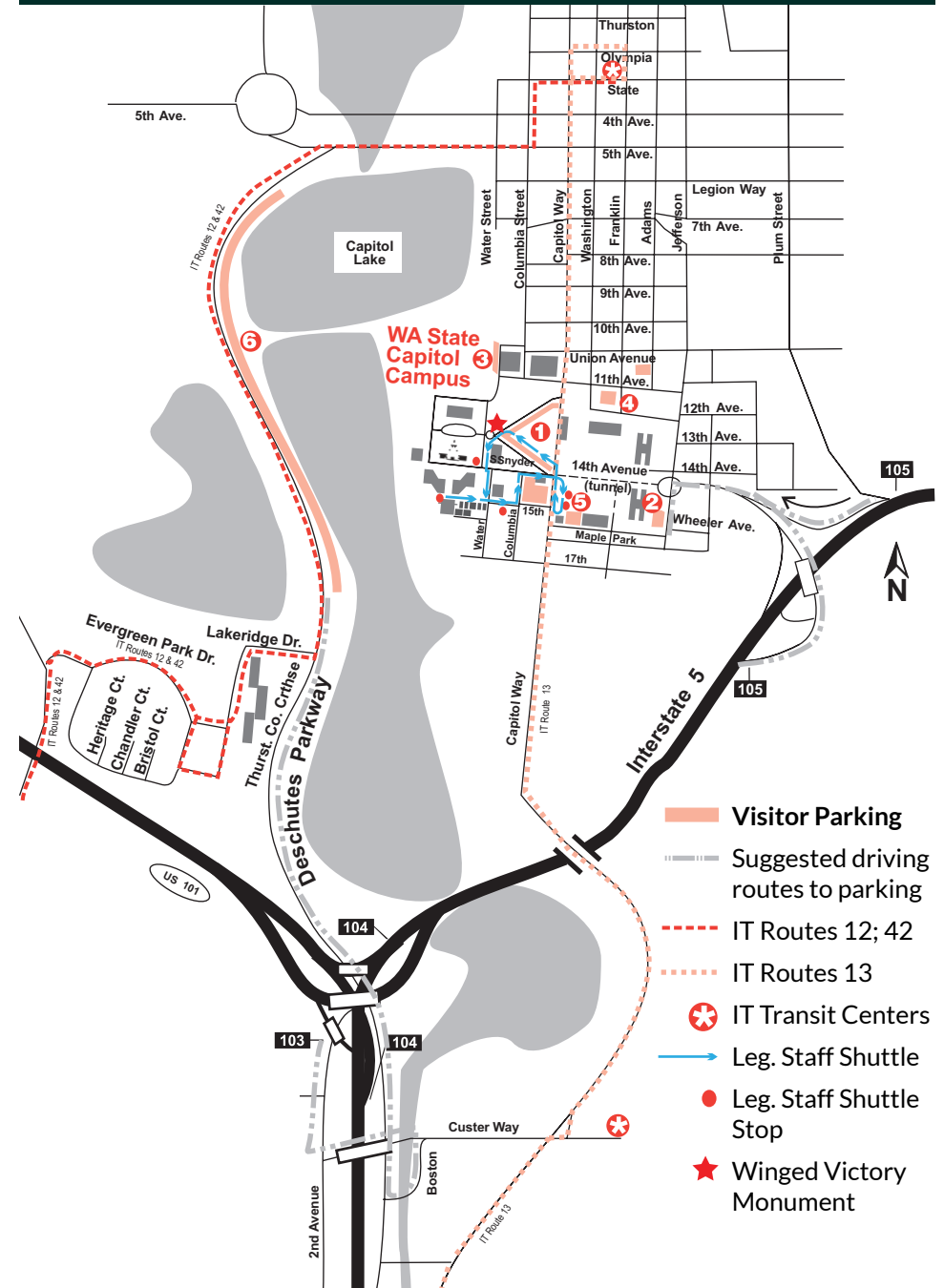
Charging Costs:

- 1 \$0.25 per kWh at Capitol Gateway Park (four-hour limit). After four hours, you must pay \$5 per hour to park here.
- 2 \$0.39 per kWh at the Natural Resources Building (30-minute limit), plus \$1 per hour to park here from 7am to 5pm Monday - Friday.
- 3 No charging fee in the Plaza Garage (four-hour limit). You must pay \$2 per hour to park here from 7am to 5pm Monday - Friday.

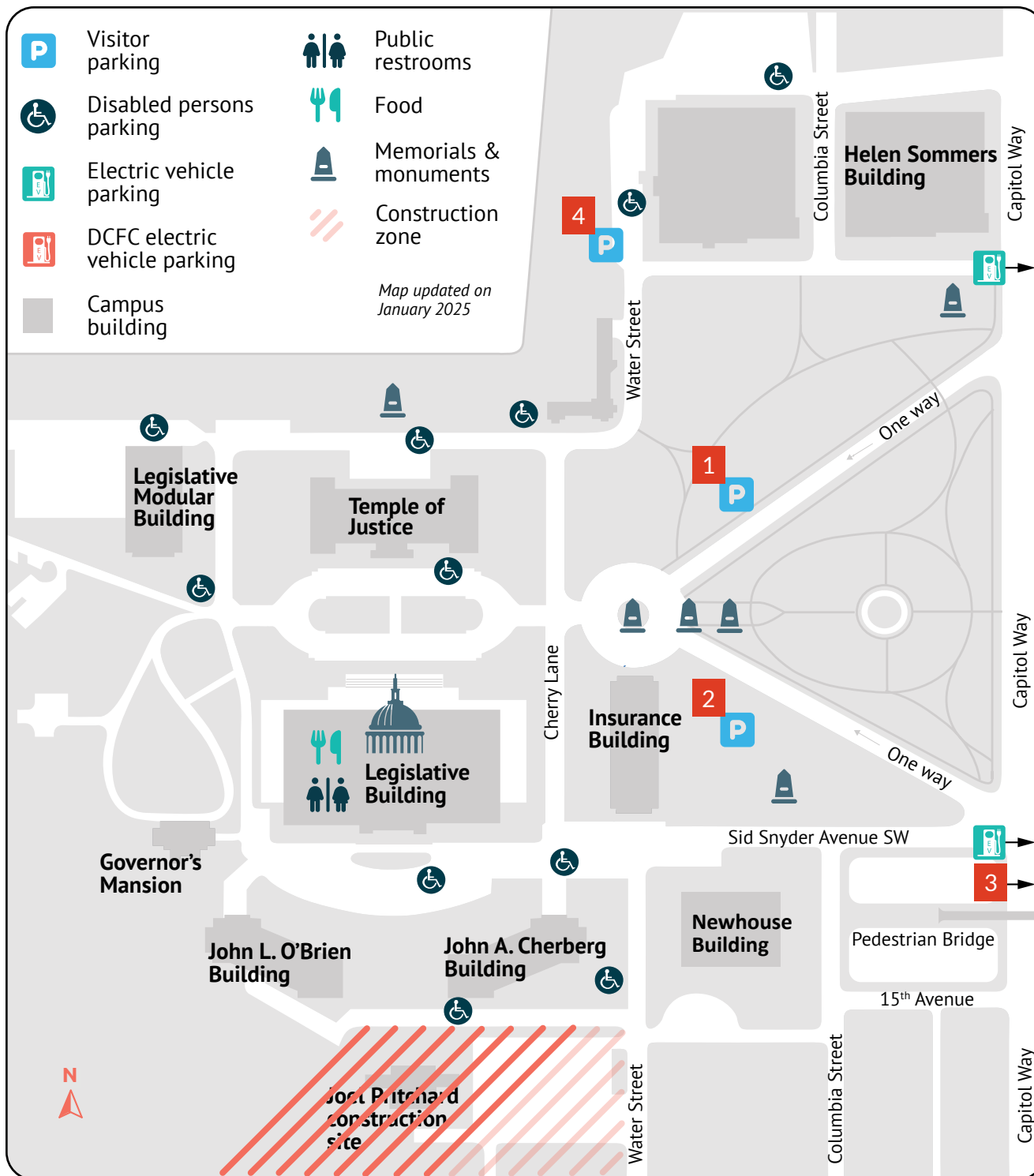


capitol.wa.gov/visit/getting-here-directions-parking

Intercity Transit route map



www.intercitytransit.com



Capitol Campus Parking

If you're visiting Capitol Campus you can park in the visitor parking lots. Visitor parking costs \$2 per hour between 7am and 5pm on weekdays. Parking is free on weekends and evenings.

Visitor parking is available at the:

- | | |
|-------------------------|----------------------------------|
| 1 North Diagonal | 3 A level of Plaza garage |
| 2 South Diagonal | 4 General Admin. Bldg. |

Accessible parking

Accessible parking is available in all lots and garages on the campus. You may park in accessible parking zones if your vehicle displays one of the following current:

- License plate for persons with disabilities
- Parking placard for persons with disabilities
- License plate year tab for persons with disabilities

Bus Routes and EV charging stations
information and maps on back

Bike parking

Bike racks are located outside most buildings. Always make sure to lock up your bike and take your valuables with you.

Shuttle service during session

During session, DES operates a shuttle service Monday through Friday (including holidays), 6am to 6pm, every 18-20 minutes. It is a seven-passenger van clearly identified with the DES logo that picks up and drops off state employees and visitors at the following locations:

- South doors of the Legislative Building
- Legislative Modular Building
- General Admin. Bldg. visitor parking lot
- Natural Resources Building visitor parking lot

Parking Questions? (360) 725-0030